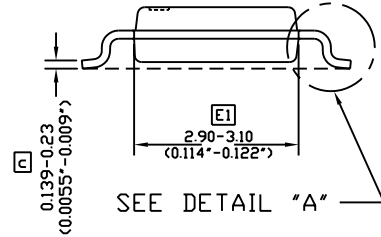
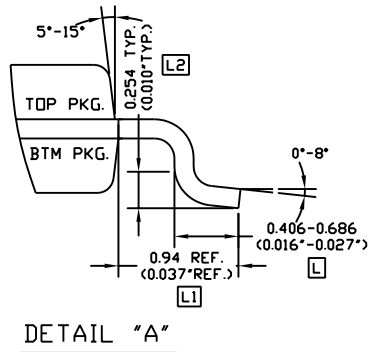
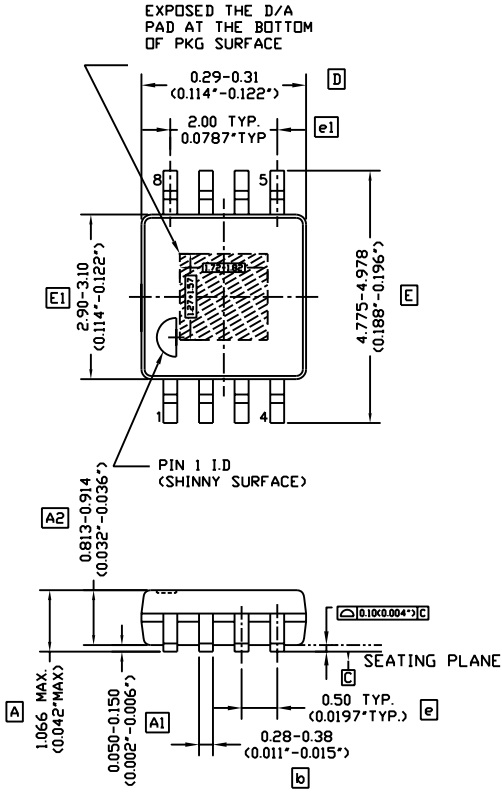


REV	DESCRIPTION	DATE
A	ORIGINAL ISSUE	OCT. 05'98
B	CHANGED TO NEW DRAWING FORMAT	AUG. 16'00



- NOTE :
1. CONTROLLING DIMENSION : MILLIMETER. CONVERTED INCH DIMENSION ARE NOT NECESSARILY EXACT.
 2. DIMENSIONING AND TOLERANCING PER ANSI Y14.5M-1994.
 3. DIMENSION 'D' DOES NOT INCLUDE MOLD FLASH, PROTRUSION OR GATE BURR, MOLD FLASH, PROTRUSION AND GATE BURR SHALL NOT EXCEED 0.15MM(0.006") PER SIDE. DIMENSION E1 DO NOT INCLUDE INTER-LEAD FLASH OR PROTRUSION, INTER-LEAD FLASH AND PROTRUSION SHALL NOT EXCEED 0.15MM (0.006") PER SIDE.
 4. THE PACKAGE TOP BE SMALLER THAN THE PACKAGE BOTTOM. DIMENSION D AND E1 ARE DETERMINED AT THE OUTERMOST EXTREMES OF THE PLASTIC BODY EXCLUSIVE OF MOLD FLASH, TIE BAR BURRS, GATE BURRS AND INTERLEAD FLASH, BUT INCLUDING ANY MISMATCH BETWEEN THE TOP AND BOTTOM OF THE PLASTIC BODY
 5. DIMENSION 'b' DOES NOT INCLUDE DAMBAR PROTRUSION. ALLOWABLE DAMBAR PROTRUSION SHALL BE 0.08 mm(0.0031) TOTAL IN EXCESS OF THE 'b' DIMENSION AT MAXIMUM MATERIAL CONDITION.



DRAWN BY: PICHEST
CHECKED BY: NATAPORN
APPROVED BY: THANAPONG
APPROVED BY: VIRAT

TITLE: 8 LEAD MSOP PACKAGE OUTLINE DRAWING. (EXPOSED PAD)		
DATE : FEB 14'01	REF. NO. : U008PD-01	SCALE : NOT TO SCALE
DWG. NO. U008PD-02	REV. B	SHEET 1 OF 1