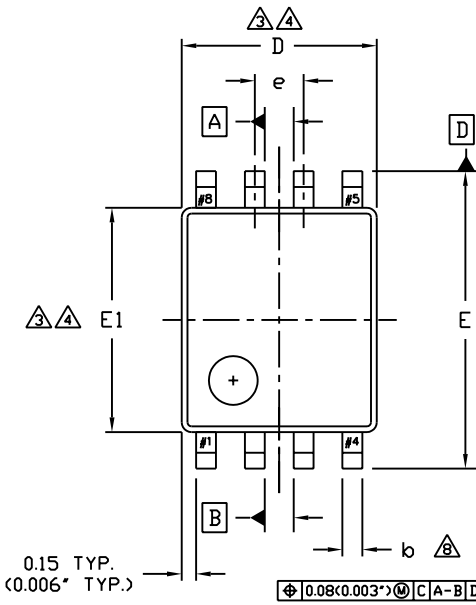


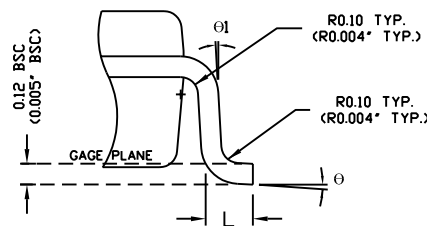
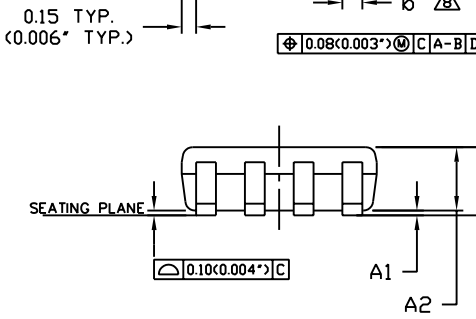
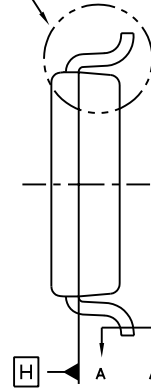
REV	DESCRIPTION	DATE
A	ORIGINAL ISSUE	MAY 10, 99
B	-CHG. LEAD THICK.FORM 0.12 TYP.TO 0.1-0.18 -CHG. LEAD WIDTH FORM 0.20TYP. TO 0.17-0.25. -CHG. TOTAL PKG. HEIGHT FORM 0.70+0.2/-0.1 TO 0.60-0.90 -CHG. LEAD ANGLE FORM 3°+2° TO 0°-6° -CHG. LEAD TERMINAL FORM 0.25±0.10 TO 0.20-0.35. -CHG. TITLE FORM USB TO 8 LEADS VSOP. -CHG. LEAD LENGTH FORM 0.37 TYP. TO 0.40 TYP. -DELETE PIN#1 IDENT. DIM,DRAFT ANGLE, PKG. RADIUS AND NOTE#5. -ADD LEAD SHOULDER RADIUS. -ADD DIMENSION 0.15 TYP..	APR 20'00
C	-CHG. TO NEW DRAWING FORMAT, ADD REF JEDEC STD.	MAY 15'01

NOTES :

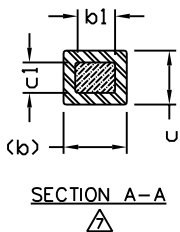
- CONTROLLING AND TOLERANCING PER ASME Y14.5-1994.
- CONTROLLING DIMENSION : MILLIMETER. CONVERTED INCH DIMENSION ARE NOT NECESSARY EXACT.
- DIMENSION "D" DOES NOT INCLUDE MOLD FLASH , PROTRUSION OR GATE BURR. MOLD FLASH , PROTRUSION OR GATE BURR SHALL NOT EXCEED 0.15 mm (0.006") PER END. DIMENSION E1 DOES NOT INCLUDE INTERLEAD FLASH OR PROTRUSION. INTERLEAD FLASH OR PROTRUSION SHALL NOT EXCEED 0.15MM (0.006") PER SIDE. D AND E1 DIMENSIONS ARE DETERMINED AT DATUM H
- THE PACKAGE TOP MAY BE SMALLER THEN THE PACKAGE BOTTOM. DIMENSION D AND E1 ARE DETERMINED AT THE OUTERMOST EXTREMES OF THE PLASTIC BODY EXCLUSIVE OF MOLD FLASH, TIE BAR BURRS, GATE BURRS AND INTERLEAD FLASH, BUT INCLUDING ANY MISMATCH BETWEEN THE TOP AND BOTTOM OF THE PLASTIC BODY. D AND E1 DIMENSION ARE DETERMINED AT DATUM H.
- LEAD FINISH IS SOLDER PLATING WITH THICKNESS OF 0.0076-0.0203 mm (300-800 MICRO INCH).
- ALL TOLERANCE UNLESS SPECIFIED ±0.050 mm (±0.002").
- THESE DIMENSIONS APPLY TO THE FLAT SECTION OF THE LEAD BETWEEN 0.08 mm (0.003") AND 0.15 mm (0.006") FROM THE LEAD TIP.
- DIMENSION 'b' DOES NOT INCLUDE DAMBAR PROTRUSION. ALLOWABLE DAMBAR PROTRUSION SHALL BE 0.08 mm (0.003") TOTAL IN EXCESS OF THE "b" DIMENSION AT MAXIMUM MATERIAL CONDITION. THE DAMBAR CANNOT BE LOCATED ON THE LOWER RADIUS OF THE FOOT. MINIMUM SPACE BETWEEN PROTRUSION AND AN ADJACENT LEAD SHALL NOT BE LESS THAN 0.07 mm (0.003").




SEE DETAIL A



DETAIL A



SYMBOL	COMMON					
	DIMENSIONS MILLIMETER			DIMENSIONS INCH		
	MIN.	NOM.	MAX.	MIN.	NOM.	MAX.
A	0.60	0.75	0.90	0.023	0.029	0.035
A1	0.00	0.05	0.10	0.000	0.002	0.004
A2	0.60	0.70	0.80	0.023	0.027	0.031
b	0.17	-	0.27	0.007	-	0.011
b1	0.17	0.20	0.23	0.007	0.008	0.009
c	0.08	-	0.23	0.003	-	0.009
c1	0.08	0.127	0.18	0.003	0.005	0.007
D	1.90	2.00	2.10	0.075	0.079	0.083
E	3.00	3.10	3.20	0.118	0.122	0.126
E1	2.20	2.30	2.40	0.086	0.090	0.094
e	0.50 BSC			0.02 BSC		
L	0.20	0.28	0.35	0.008	0.011	0.014
theta	0°	3°	6°	0°	3°	6°
theta1	10° REF			10° REF		

	DRAWN BY: PICHEST		TITLE: 8LD VSOP PACKAGE OUTLINE DRAWING		
	CHECKED BY: NATAPORN				
	APPROVED BY: THANAPONG		DATE : MAY 15'01	REF. NO. : JEDEC MO-187 'CA'	SCALE : NOT TO SCALE
	APPROVED BY: VIRAT		DWG. NO. H008PO-01	REV. C	SHEET 1 OF 1